

Victoria House, 250 Great Ancoats Street, Manchester, M4 7BU

£415 Per Week

JUST COMPLETED

BRAND NEW APARTMENT IN VICTORIA HOUSE, 250 GREAT ANCOATS STREET M4

BEING FURNISHED

20TH FLOOR

TWO BED TWO BATH SPACIOUS APARTMENT
LOCATED 5 MINUTES FROM PICCADILLY STATION

RESIDENTS ROOF GDN, GYM, LOUNGE & CO WORKING SPACES AS WELL AS 24 HR CONCIERGE

CALL NOW FOR A VIEWING

- JUST COMPLETED
- BRAND NEW
- 2 BEDROOM 2 BATHROOM APARTMENT
- FURNISHED TO A HIGH STANDARD
- 20TH FLOOR
- VICTORIA HOUSE, 250 GREAT ANCOATS STREET M4
- RESIDENTS LOUNGE, GYM, ROOF GDN & CO WORKING SPACE
- LOCATED IN THE CENTER OF MANCHESTER
- 5 MINS WALK TO PICCADILLY STATION
- GREAT VIEWS FROM THE APARTMENT

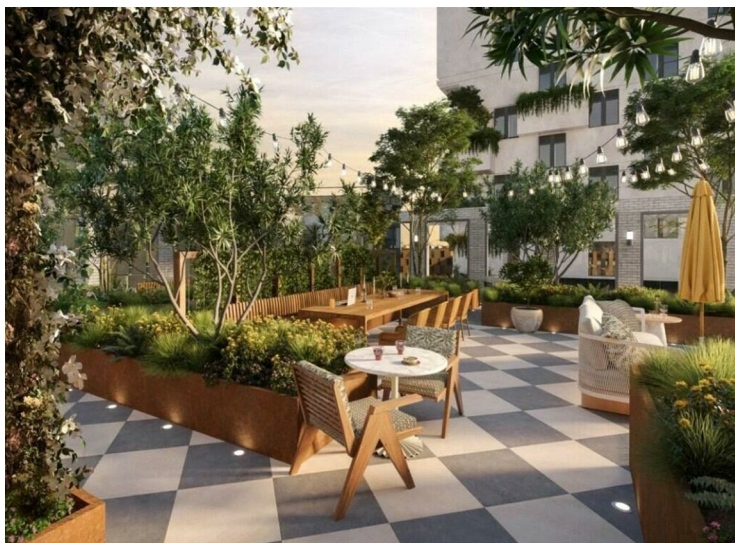
Victoria House, 250 Great Ancoats Street, Manchester, M4 7BU



VICTORIA HOUSE (CGI)



LOBBY (CGI)



ROOF GARDEN (CGI)



Energy Efficiency Rating		
	Current	Potential
Very energy efficient - lower running costs		
(92 plus) A		
(81-91) B	80	80
(69-80) C		
(55-68) D		
(39-54) E		
(21-38) F		
(1-20) G		
Not energy efficient - higher running costs		
England & Wales		EU Directive 2002/91/EC
Environmental Impact (CO ₂) Rating		
	Current	Potential
Very environmentally friendly - lower CO ₂ emissions		
(92 plus) A		
(81-91) B		
(69-80) C		
(55-68) D		
(39-54) E		
(21-38) F		
(1-20) G		
Not environmentally friendly - higher CO ₂ emissions		
England & Wales		EU Directive 2002/91/EC

We have prepared these property particulars as a general guide to a broad description of the property. They are not intended to constitute part of an offer or contract. We have not carried out a structural survey and the services, appliances and specific fittings have not been tested. All photographs, measurements, floorplans and distances referred to are given as a guide only and should not be relied upon for the purchase of carpets or any other fixtures or fittings. Lease details, service charges and ground rent (where applicable) and council tax are given as a guide only and should be checked and confirmed by your Solicitor prior to exchange of contracts.